



# E News July 2022

Issue 84

[stretjesus2012@gmail.com](mailto:stretjesus2012@gmail.com)

[www.streetjesus.org.uk](http://www.streetjesus.org.uk)

## Street Jesus News:

Welcome to the July edition of our e-news. We hope you are enjoying the summer and all the light evenings. The Street Jesus team enjoyed a wonderful outreach at the Trinity park car boot in Ipswich last Saturday even though we had to get up at Silly o'clock. It started well as we gained free entry because we are a charity, so we were able to donate our normal entrance fee to a couple raising money for their daughter who was living in a home run by Mencap in Essex. We gave out free chocolates to all the stallholders as usual as well as many of the punters. We had lots of conversations during the day, some accepting prayer for healing, others had personal issues requiring reconciliation to which we offered a listening ear. We had a number of Jesus conversations with "I am not religious" being a common refrain. We were able to speak of a God of relationship as opposed to just rituals, rules and regulations. We heard a number of interesting life stories. The ice cream vendor parked beside us and offered us free ice cream. He had remembered that we had given out free chocolates at our recent outreach at Woodbridge football club so wanted to return the favour. We took a new approach quite spontaneously on the day, two of the team went on walkabouts talking to all the stallholders where



normally we adopt an attractional approach preferring people to come to us. There was much laughter around the site as we circulated around with further interesting conversations. £26 was raised for the Beehive childrens foundation from the sale of African crafts. We received many fond goodbyes and waves from people as they left the site. During our debrief we prayed for the many people we had met who are in need. We really felt that the Holy spirit was with us on the day. Our next outreach is this coming Sunday 3rd at the Ipswich music day in Christchurch park and we would love to meet with you there.

Following on from the Spring harvest theme of Restore Renew Rebuild and the idea that God may want us to do a new thing we have taken different approaches in our last few outreaches. We have sung worship songs in public for the first time, moved away from the stall and circulated instead of being static and we are now considering a new area of work. We have felt for sometime that our work is basically a seed sowing operation. We rarely get to follow up on the people we meet and further help people to move closer to God or see what happens in their life. We have been praying about starting a group for seekers of faith and those who have

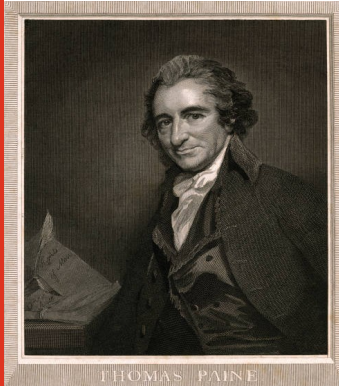


## Street Jesus News:

been church goers in the past but who no longer go, for whatever reason. We have been consulting with a lot of experienced Christians who have run such groups in the past. The consultations have been interesting and we will be discussing what we have learned at our next meeting. What is also interesting is the significant increase in people I have met, mainly in my work who are curious about faith. I have met people who are wanting to explore humanism, one who whilst bored had randomly picked up a bible whilst in hospital and wanted to know more, another who had been hurt by people in a church but still had a need to explore God. A 'spiritual' person beginning a new chapter in their life. An ex Jehovah witness who spoke about the end times. Another person who felt very lost. There have been many opportunities to speak of the Lord to whom such a group could be helpful. If we agree to go ahead ( probably in the Autumn ) the meetings will include food, then take the form of a discussion where we will ask to be led by the holy spirit to help us in our knowledge, prayer and worship to grow together Its interesting that we are suddenly being asked lots of questions. We are very excited at the prospect and continue to seek Gods wisdom.



Humanism as an idea has become very popular in recent years and has been promoted by the BHS (British Humanist Society) and National secular society.



Humanism has its origins in the 1700's as the enlightenment brought an explosion of scientific and philosophical ideas many based in the ancient writings of Greek and Rome. Writers such as Thomas Paine promoted the Rights of man with many beginning to reject religion particularly the supernatural and spiritual dimensions in favour of a materialistic outlook. People were also beginning to reject powerful authoritarian structures such as the church seeing them as an impediment to freedom and liberty. Humanism is well intentioned and seeks the good but as it encourages people to be individualistic and to self actualise, that focus on the self can lead to some problematic places. We believe that our freedom is found in Christ alone and that focus touches the deeper parts of our humanity. We are to look outwards toward others We do not create our own contentment as we rely on Gods grace for every good thing that we encounter. Interestingly the early humanists understood that it was natural for people to embrace faith and believe in God to help make sense of existence and recognises the benefits faith could bring to the individual. Humanism today is less broad minded and largely rejects the idea of God and requires atheism.



We have been covering the book of Esther in our studies, it being one of the few books of the bible that does not mention God directly but it is so helpful and leads us to understand that sometimes we may need to inconvenience ourselves even put ourselves in an uncomfortable position or danger. Jesus did this a number of times and ultimately on the cross that we might receive his boundless grace.

As we go out at the Ipswich music day may we realise that we too may feel uncomfortable but remember that she had to approach King Exerxes not knowing whether she might be executed for asking an audience with the King. May we have her courage. Blessings Graham





## Worship

SUFFOLK COASTAL  
RIVERSIDE CENTRE  
STRATFORD ST ANDREW  
Third Thursday of the month.  
<https://thefillingstation.org.uk/station/suffolk-coastal/>

MID SUFFOLK  
STOWUPLAND VILLAGE HALL  
Meetings Second Wednesday of each month.  
<https://thefillingstation.org.uk/station/mid-suffolk/>



**THE  
FILLING  
STATION**

**A new informal way of expressing  
the Christian faith**

**PRAISE AND WORSHIP**

IT'S ALL ABOUT

**JESUS**

**YOXFORD VILLAGE HALL**

**Postponed until further notice**

**ALL WELCOME**



Trimley St Martin Memorial hall - Worship evening  
Every 4th Saturday of the month.



[homeforgood.org.uk/connect-locally/suffolk](http://homeforgood.org.uk/connect-locally/suffolk)

[www.light-wave.org](http://www.light-wave.org)

[lightwave.community](http://lightwave.community)



[www.ministryofmusic.co.uk](http://www.ministryofmusic.co.uk)

MINISTRY  
OF MUSIC

DISCOS  
BANDS  
SINGERS  
DANCE GROUPS  
WORSHIP LEADERS  
TECHNICAL SERVICES

EQUIPPING CHRISTIAN EVENTS WITH QUALITY MUSIC



Clare priory

[clarepriory.org.uk](http://clarepriory.org.uk)



[www.cantusfirmus.org.uk](http://www.cantusfirmus.org.uk)

CANTUS  
FIRMUS



GOOD  NEWS

*for Everyone!*

[goodnewsuk.com](http://goodnewsuk.com)

formerly known as GideonsUK



Prayer



[rodandjulie.com](http://rodandjulie.com)



## IPSWICH IN PRAYER

PRAYING FOR THE TRANSFORMATION OF THE TOWN  
BY THE PRESENCE AND POWER OF GOD

[www.ipswichinprayer.co.uk](http://www.ipswichinprayer.co.uk)



**PRAYER**  
Every Tuesday  
7pm  
Kelsale Village Hall  
IP172PB

Contact Paul or Mandy  
Weekes on 01728-604053

## Open to God Service

**1st Sunday of the month at 6.30pm**



[www.avenuenevangelicalchurch.org.uk](http://www.avenuenevangelicalchurch.org.uk)

42 Warwick Ave  
Woodbridge  
01394 383479

# Network SUFFOLK

\*

<https://networksuffolk.org.uk/>



churches  
together  
WOODBRIDGE AREA

## BIG FAMILY DAY OUT

100% FREE HOG ROAST, ICE CREAM, CREAM TEA,  
BOUNCY CASTLES, GAMING BUS, ENTERTAINMENT

**SUNDAY 17 JULY 10AM - 1PM**  
Kingston Field, Woodbridge, IP12 4AX

## COMMUNITY CUPPA

What is a Community Cuppa?

Pop in and enjoy a cuppa and chat and find out how the Later Life Community Team can help you or your community.

The Community Cuppa is aimed at people aged 65 + living in **Woodbridge** and surrounding areas.

**FREE  
Entry**

**Time: 10:00am - Midday**

**Location: Woodbridge Community  
Hall,  
Station Road, Woodbridge, IP12 4AU**

For more information:  
Tel: 07878 768288

Email: [Tracey.Evans@bsevc.co.uk](mailto:Tracey.Evans@bsevc.co.uk)

Later  
Life  
Community  
ENGAGE

### Community Cuppa Calendar:

**2022**

Tuesday 24th May

Tuesday 26th July

Tuesday 23rd August

Tuesday 25th October

Tuesday 22nd November

**2023**

Tuesday 24th January

Tuesday 28th February

Tuesday 25th April



\*For over 65's in Woodbridge and surrounding area



[www.communitiestogethereastanglia.org](http://www.communitiestogethereastanglia.org)

Registered Charity: 1004198



**BBC**



COME AND SING WITH US IN LONG MELFORD AT

# Holy Trinity Church

Tuesday 19th July

18:30 - 21:30

GET IN TOUCH TO BOOK YOUR FREE TICKET:

[SOPcongregations@avantimedia.tv](mailto:SOPcongregations@avantimedia.tv) | 07734 030 888



**AVANTI**

Church Walk,  
Long Melford,  
Sudbury CO10 9DL

**NINE  
LIVES**

The  
**BASIC**  
Life Charity



## The BASIC Life Charity COMMUNITY POP-UP-SHOP

Come along to



2 Carr Road, Felixstowe, IP11 2FS

Friday Mornings at 11 am

**AFFORDABLE FOOD**

Fill a bag for £2.00

NO CRITERIA - ALL WELCOME



# Mental Health Mates Ipswich



**Christchurch Park**

Meet by the benches  
near the mansion

Free twice monthly  
walk to connect and  
share without fear or  
judgment

For details email  
[mhmipswich@outlook.com](mailto:mhmipswich@outlook.com)  
or find us on Instagram:

#findyourwe

mhmipswich  
mentalhealthmates   
[www.mentalhealthmates.co.uk](http://www.mentalhealthmates.co.uk)



A free phone line of hymns,  
reflections and prayers

## Now Recruiting

- ☐ Post COVID, Felixstowe Town Pastors are about to restart patrolling on Saturday nights from 6.30-11.30 pm.
- ☐ If you'd like an application form, or to find out more, please contact Peter Livey :-
  - ☐ Email [peterl.ftp@gmail.com](mailto:peterl.ftp@gmail.com)
  - ☐ Telephone 07770 536988.
- ☐ We'd love to expand our volunteer team of Town Pastors (patrolling), Base-Prayers (supporting Town Pastor at our base), and Home-Prayers (praying for 1 hour at home)





*You are invited to an*  
**AFTERNOON  
WITH  
BOOST**



An afternoon to experience the breadth  
and depth of school chaplaincy

**Sunday 10 July 2022**

**3pm - 5pm at Felixstowe School**

Visit [www.boostfelixstowe.org.uk/afternoon](http://www.boostfelixstowe.org.uk/afternoon) to let us know you can make it.

# COME ALIVE

with PRAISE and TESTIMONY

River of life Church - Felixstowe

**Third Sunday of Every Month**

**7:00 pm - 8:00 pm**

*Come together to enjoy a time of live worship and testimony.*

# Pilgrimage of Song – Shelland to Great Finborough

For our second Pilgrimage of Song in 2022 we will be visiting five small churches west of Stowmarket, singing a short service at each before ending with a meal.

**WORKSHOP** The day begins with a workshop in which we learn the music to be sung at churches on our route. There will be a variety of music to suit varying abilities including both experienced choral singers and those who just enjoy singing the tune.

**WALK and SERVICES** After an initial service at Shelland Church, our route takes us to Harleston, Onehouse and Buxhall, finishing at Great Finborough for the final service.

**WHO IS LEADING?** Music will be directed by Richard Hubbard (St Edmundsbury & Ipswich Music Development Director).

**MEAL** The day ends with a hot meal at *The Shepherd and Dog*, Onehouse.

**TRANSPORT** Walkers will need to make their own arrangements to get to Shelland for the start of the walk, and to return there at the end of the day. Most people pair up with someone else and bring two cars. If you are coming alone, then there will be lifts back to Shelland.

---

**HOW MUCH DOES IT COST?** There is a suggested donation of £15 per person (under 18s free), to cover the costs of the event, including provision of music scores for the day. Donations can be more or less than the suggested amount.

The meal, at *The Shepherd and Dog*, Onehouse, is an optional extra. Main Course £11.95, Pudding £5.95. Menu choices can be found on the booking form.

**IS IT SUITABLE FOR CHILDREN?** Although the event is not specifically geared towards children, under 18s are welcome to attend if accompanied by an adult. Most children aged 9 and above will be able to enjoy the singing and walking.

**CAN I BRING A DOG?** Unfortunately dogs are not permitted.

**WHAT IS THE ROUTE?** Shelland – Harleston – Onehouse – Buxhall - Great Finborough. Total walk around 6 miles, but you can omit the section to Buxhall Church, thus shortening the walk to less than five miles. See map below.

This event forms one part of the (non-singing) Ethelbert Pilgrimage, from Falkenham To St Edmundsbury Cathedral, being held in 18 stages during the summer. For details on that pilgrimage (which is not organised by Cantus Firmus) contact [Ian Angus](#).

**WHAT ABOUT LUNCH?** Bring your own packed lunch and drink. We will be stopping for a lunch break at Onehouse. Light refreshments may be served at some churches.

**WHAT SHOULD I WEAR?** The walk will include public footpaths, which may be muddy. Please choose appropriate footwear, and bring waterproofs if there is a risk of rain.

**HOW DO I BOOK?** Advance booking is essential. Booking closes at 9am on Friday 8 July. Please use one form per person. Under 18s must be accompanied by a responsible adult, and their place must be booked by a parent or guardian.

Payment by BACS is preferred, with the option to send a cheque. Payment must be made by Tuesday 11 July. On booking you will receive an email with details of how to pay.



# Repair Café

## Woodbridge

*Bin it? No way!*

### Examples of repairs:

- A toaster that no longer works
- Hem that's come down
- A lamp with a broken switch



The Repair Cafe is run by volunteers who assist in the repairing of broken items for a voluntary contribution.



### Supported by:



Runs within  
The Hub  
community cafe

Do join us!

### Supported by:



First Monday of every month  
10 am-12 Midday  
St Johns Church Woodbridge, IP12 1HS

## PRAY FOR UKRAINE





## Fostering or adoption – Is it for me?

**Every fifteen minutes in the UK, a child will come into care**

Many will have suffered neglect or abuse, all will experience trauma and loss. Each one deserves a home where they will be loved, nurtured and enabled to thrive, whether that's through short-term or long-term foster care, with a new adoptive family, or through supported lodgings.

- Are you aged 21 or over?
- Do you have a spare room?
- Do you have time and love to give?

### WHY NOT TRY OUR NEW EARLY STEPS ONLINE INFORMATION EVENING

Our new termly information session to help support those who want to discover more, those who are in assessment or those preparing to welcome children through fostering, adoption or supported lodgings

#### NEXT SESSION

**Wednesday 29th June 8pm on Zoom.**

Please email [hello@homeforgoodsuffolk.org.uk](mailto:hello@homeforgoodsuffolk.org.uk)

To register your interest ask for the meeting codes|



**Early Steps**

Home for Good: Suffolk is Christian response to the social need for more foster families and adoptive home by raising awareness of the local need through connecting and partnering with Suffolk Churches. We do not assess or place children but signpost enquiries and work closely with our local authority, Suffolk fostering and adoption teams.

We are separate from but connected to national charity Home for Good, operating under local charity Transforming Futures – Suffolk (Charity No. 1169250)

We provide groups, activities and events throughout the year to connect families in Suffolk who foster, adopt or have special guardianship. We want to ensure all families feel supported and connected – Everyone is welcome regardless of faith or background!





TUESDAY AT 1PM TO 2PM

JOIN US FOR  
COFFEE, TEA &  
CAKE WHILE  
YOU SHOP

# FOOD MARKET

£2 a Bag



SUPPORTED  
BY



HERE FOR YOU



[www.nrbconline.org](http://www.nrbconline.org)

Tel: 07759501523



## Bike Ride and Stride Saturday 10 September

Along with Churches across Suffolk, River of Life will be open from 9.00 am to 5.00 pm on Saturday 10 September 2022 for the annual Suffolk Historic Churches Trust Sponsored Bike Ride. *Walkers are encouraged too so it is a Bike and Stride!*

*We will need 2 volunteers for each hourly slot to welcome cyclists or walkers, sign their forms and offer some refreshment.*

*Some might also like to see round the Church.*

*If you would like to help, please contact Anita in the Church Office.*



If you would like to take part in the bike ride and stride, full details on how to register, including sponsorship forms are available via the Suffolk Historic Churches Trust website: <https://shct.org.uk/ride-and-stride/>







## Foxearth Meadows Nature Reserve

on the banks of the River Stour

### A free event for National Meadows Day

**Saturday, 2 July**  
(10.30 am—3.30 pm)

- Nature Activities including Pond-dipping
- Simple crafts for families
- **FoxeARTh**: art and nature, for beginners and experienced artists alike, led by artist and printmaker Stella Davis. (Please book a place for this on 07599 398866 or e-mail: [artwisestella@gmail.com](mailto:artwisestella@gmail.com))
- Bring a picnic and enjoy our beautiful landscape

For further information, contact Mark Prina  
on 07548 209652 / [mark.prina@arocha.org](mailto:mark.prina@arocha.org)  
or Andy Jowitt on 07584 751093 / [andy.jowitt@arocha.org](mailto:andy.jowitt@arocha.org)

#### FOXEARTh MEADOWS NATURE RESERVE, FOXEARTh, CO10 7HZ

The reserve is about a mile north of Foxearth village, between the River Stour and the lane west of Constable's Farm and Constable's Barn (CO10 7HZ).

From Long Melford travelling west towards Clare (A1092), turn first left after GCB Cocoa (formerly Philips Avert), signposted 'Pentlow Road'. Then take the next left (signposted 'Liston') and the site is about 200 metres on the left.

Follow 'what3words': [charm.dragonfly.townhouse](https://www.what3words.com/charm.dragonfly.townhouse) Grid Ref. TL 8331 4598

✓Eco-toilet ✓Car park on site

[arocha.org/events](http://arocha.org/events)



## Commit & Connect Course

*Committing to Jesus & Connection to the Church*

**Saturday 30 July**

9.45 am at Christian Life Centre

If you want to become a member  
or just want to know us better, our  
'Commit & Connect' membership course is for you.

This is your opportunity to find out about River of Life Church  
and how we are part of God's plan for fulfilling His purposes.

Please register your interest:

Website: [www.riveroflifechurch.net](http://www.riveroflifechurch.net) [Connect Joining RoL]

Email: [mail@riveroflifechurch.net](mailto:mail@riveroflifechurch.net) or

Phone: 01394 273700





# CAP Money Course

The CAP money course is a **FREE 2 session** course for everyone.  
Here are the three aims:

1. To equip you to improve your money management.
2. To encourage you to look at your own finances and make changes that are tailored specifically to your needs.
3. To enable you to successfully budget, save and keep out of debt.

1st & 8th July, 10am to 12pm  
St Philips Community Hub, Wadgate Road,  
Felixstowe, IP11 2LY. Call 07394 177634 to book.  
**FREE Tea, Coffee & Cake!**



**budget. save. spend.**



churches  
together

WOODBIDGE AREA

# BIG FAMILY DAY OUT

100% FREE  
HOG ROAST, ICE CREAM,  
CREAM TEA, BOUNCY CASTLES,  
ENTERTAINMENT

**SUNDAY 17 JULY 10AM - 1PM**

Kingston Field, Woodbridge, IP12 4AX

## Jubilee Celebrations

at  
St Matthew's Church  
Ipswich

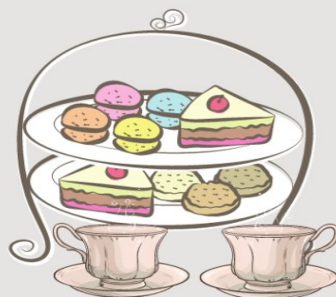


**Saturday 4th June, 2:30pm,  
Songs of Praise followed by Cream  
Tea.**

**For catering purposes please book  
in by signing-up below.**

**Or Call the Parish Office:  
01473 251630**

Donations accepted on the day.

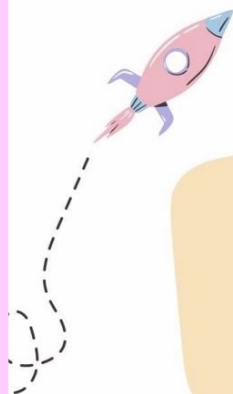


StMatthew'sIpswich





Discovering God's  
wonderful world



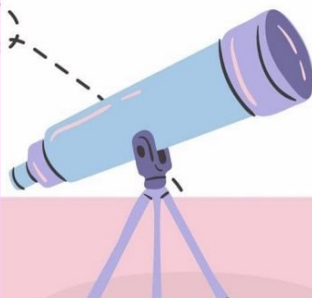
# WONDER ZONE

## AT RUSHMERE BAPTIST CHURCH

A free Bible based holiday club for  
primary school aged children.  
Crafts, games, stories, songs, dancing  
experiments and endless fun.



2ND -5TH AUGUST  
10AM-1.00PM



LIMITED SPACES  
PLEASE FILL OUT THE  
FORM BELOW TO  
REGISTER



RUSHMERE

**Affordable  
Food**



**Community**

*Business And Service In Christ*

**The BASIC Life Charity Pop-Up Shop**

**St.Felix Church, Rendlesham**

**Every Tuesday 11am**

*All Welcome!*

*"Alpha is a way to explore what  
we hunger after - meaning and  
intimacy and relationship... In a  
very non-pressed,  
non-judgemental environment."*

*- Bear Grylls  
host of "Man vs Wild".*

**Alpha**



## CHURCHES THAT RUN ALPHA COURSES

HOPE CHURCH IPSWICH - [www.hopeipswich.co.uk](http://www.hopeipswich.co.uk)  
BURLINGTON BAPTIST CHURCH IPSWICH Tel- 01473-259271  
TRIMLEY ST MARTIN CHURCH Tel 01394-200406  
ST JOHNS CHURCH WOODBRIDGE 01394-383162  
COLCHESTER ROAD BAPTIST CHURCH IPSWICH -01473-290115  
ST AUGUSTINES CHURCH - IPSWICH- 01473 723960

## Outreach

# STREET JESUS



Our next outreach will be at The  
Music day in Ipswich 12 noon-8pm on  
Sunday July 3rd





## BLESSING JARS

Supporting the Beehive Nakuru Kenya  
A great place to put your loose change in and say a blessing at the end of the day.  
To obtain a jar please e-mail  
[thepaellalady@gmail.com](mailto:thepaellalady@gmail.com) or  
[Pam@jenkins-net.co.uk](mailto:Pam@jenkins-net.co.uk)

# Begin The Adventure

Alpha Course  
Begins Saturday 5 March

## Register Now:

Website: [www.riveroflifechurch.net](http://www.riveroflifechurch.net)  
[Teaching Alpha]

Email: [mail@riveroflifechurch.net](mailto:mail@riveroflifechurch.net)

Phone: 01394 273700



## Community Safety Ambassadors

Supporting older people in your  
community



Join one of our free Community Safety Ambassador events to learn more about supporting older people in your community.

This event will focus on the potential dangers faced by older people in their everyday life and share vital messages and services which can help save lives.

Register now to learn more about fire safety, home security, anti-social behaviour, Warm Homes Suffolk, personal safety, digital aids, falls preventions, doorstep crimes and much more!

### **Monday 6th June at 09:45 - 12:30**

The Hotel Victoria, Kirkley Cliff Road,  
Lowestoft, NR32 0BZ

### **Wednesday 8th June at 9:45 - 12:30**

Kesgrave War Memorial Community Centre,  
Twelve Acre Approach, Kesgrave, IP5 1JF

### **Register now!**

Register for one, or both, events now:  
[communities@eastssuffolk.gov.uk](mailto:communities@eastssuffolk.gov.uk)  
0333 016 2000.



EASTSUFFOLK  
COUNCIL





Welcome to Alive@4

We meet in St. Michaels Church

At 4pm on the 3<sup>rd</sup> Sunday of the month

This is a family worship with a difference, with activities for children and families including crafts, music, and games and a special tea for everyone.

We currently meet in St. Michaels Church ready to start at 4pm.

There will be a short time of worship as we begin

Everyone is welcome; please let us know if you are planning to come so that there is plenty to eat.

For more information, or to tell us you are coming, please contact:

Revd. Mary Lamb, [marylamb1952@googlemail.com](mailto:marylamb1952@googlemail.com)

or Wendy Phelan on 01728 720125 or check details with the parish office ...framparish@gmail.com We have had great fun in the past and look forward to seeing old and new families.



BUZZ KNITS Supporting the Beehive Nakuru Kenya  
[www.facebook.com/buzzknits](http://www.facebook.com/buzzknits)



## CHURCH CAFÉ'S



CROSSROADS-Saxmundham High Street  
THE RUNWAY-St Michaels and all Angels Martlesham  
OPEN DOORS -All Saints Wickham Market-Every Friday morning.  
HUB COMMUNITY CAFÉ-St Johns Woodbridge - Every Monday morning 10-12

[24/7prayer.com](http://24/7prayer.com)

Lectio 365– A daily devotional



PRAYER MEETING

Monday August 8th 7.30pm

# STREET JESUS



7 Featherbroom Gardens

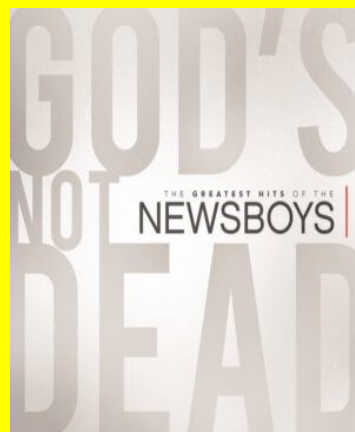
Wickham Market IP130JH

## Gallery



The Street Jesus team at our recent outreach at Trinity park car boot sale in Ipswich

## CD of the month

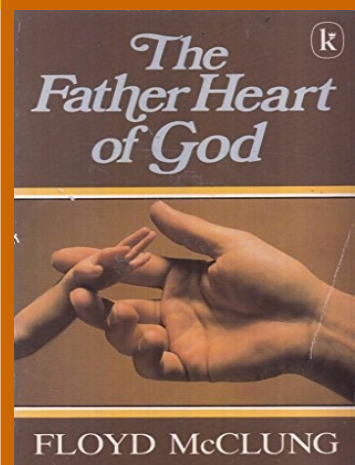


## CD of the month

God's not dead.

The News Boys

## Book of the month



## BOOK OF THE MONTH

.This book by Floyd Mc Clung is written from the perspective of his work on the hippy trail and in the red light district of Amsterdam. It explores the inner hurt of the people he met, many of whom were desperately lost, many went there as a form of escapism. It explores the father relationship and compares it with the healing perfect love of father God.

## Facebook



If you would like to join our facebook page

[www.facebook.com/groups/1246450225452294](https://www.facebook.com/groups/1246450225452294)



# 'THEOS'

*Think tank on religion and society*

[www.theosthinktank.co.uk](http://www.theosthinktank.co.uk)

## Gatherings



**New Wine** July 23rd– August 3rd 2022

[www.new-wine.org](http://www.new-wine.org)

**Spring Harvest** April 10th –14th 2023

[www.springharvest.org](http://www.springharvest.org)

**Big Church day out** May 29th –31st 2022

[www.bigchurchdayout.com](http://www.bigchurchdayout.com)

**Keswick** July 16th-August 5th 2022

[Keswickministries.org](http://Keswickministries.org)

**Greenbelt** August 26th-29th 2022

[www.greenbelt.org.uk](http://www.greenbelt.org.uk)

**Word Alive** April 1st-6th 2023

[www.wordaliveevent.org](http://www.wordaliveevent.org)

**Dauids tent** August 26th-29th 2022

[www.davidstent.net](http://www.davidstent.net)

**Hillsong Conference** July 27th-29th 2022

[www.hillsong.com](http://www.hillsong.com)

**Newday** August 20th-22nd 2022

[www.newday.co.uk](http://www.newday.co.uk)

We Support



[Beehiveafrica.org](http://Beehiveafrica.org)

## Bible reading

On the third day of the fast. Esther put on her royal robes and entered the inner court of the palace, just across from the Kings hall. The King was sitting on his royal throne, facing the entrance when he saw Queen Esther standing there in the inner court, he welcomed her and held out the gold sceptre to her. So Esther approached and touched the end of the sceptre. Then the King asked her "What do you want Queen Esther? What is our request? I will give it to you even if it is half the Kingdom. And Esther replied " If it pleases the King, let the King and Haman come today to a banquet I have prepared for the King. The King turned to his attendants and said "Tell Haman to come quickly to a banquet as Esther has requested" So the King and Haman went to Esther's banquet. And while they were drinking wine the King said to Esher "Now tell me what you really want. What is your request? I will give it to you even if it is half the kingdom" Esther replied "This is my request and deepest wish If I have found favour with the king and if it pleases the King to grant my request and do what I ask, please come with Haman tomorrow to the banquet I will prepare for you. Then I will explain what this is all about"

Esther 5:1-8

## Prayer



God of many names

O God of many names  
Lover of all nations.  
We pray for peace in our hearts  
in our homes  
in our nations  
in our world  
The peace of your need  
The peace of our need  
Amen

## Quote to note

"God never said that the journey would be easy, but He did say that the arrival would be worthwhile" -

Max Lucado .

## Please get involved

If you have a heart for sharing the good news of Jesus Christ with others and would like to become involved with our project then please contact us for more information.

If you would like us to promote any of your Church events we will do our best to include them in our e news.

If you would like to contribute to e-news with any information or recommendations such as a book, music C D, film, article, a prayer, or a bible verse then please e mail us on [streetjesus2012@gmail.com](mailto:streetjesus2012@gmail.com).

Our next meeting will be on Monday 4th July at 7.30 pm. At 7 Featherbroom Gardens Wickham Market IP130JH

THANK YOU !

**Thank you for showing interest in the Street Jesus project. If you do not wish to receive our e news or would like more information about the project please**

**e mail [streetjesus2012@gmail.com](mailto:streetjesus2012@gmail.com)**